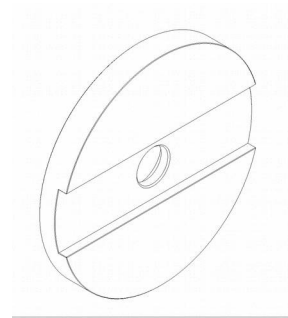
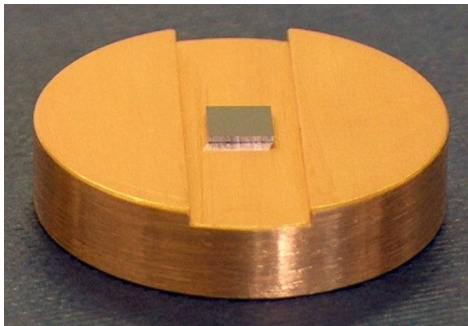


Mounted filter data sheet LPF- λ -5x5-25.4g-c

Filter chip area	5 mm x 5 mm
Filter chip thickness	625 μ m
Chip material	semi-insulating GaAs

The filter chip is glued on a gold-plated copper ring with 25.4 mm outer diameter and a 4 mm \varnothing center hole using a thermal conducting paste.

Mounted SOC



Mount: gold-plated copper ring with: 25.4 mm outer diameter
4 mm diameter center hole
3 mm thickness

