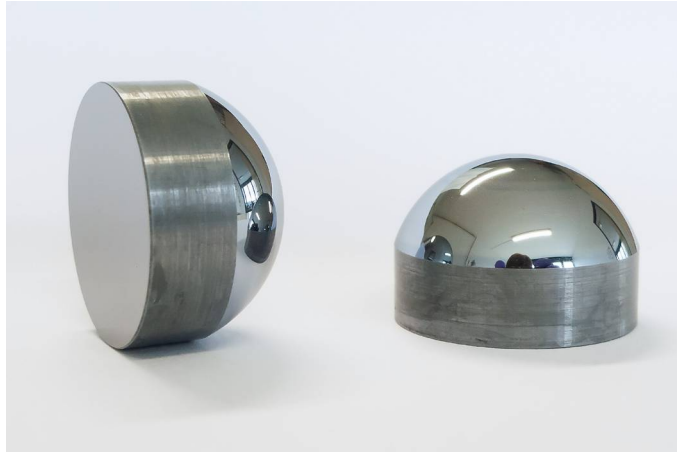


CL-20 - Collimating elliptic silicon substrate Lens with 20 mm diameter

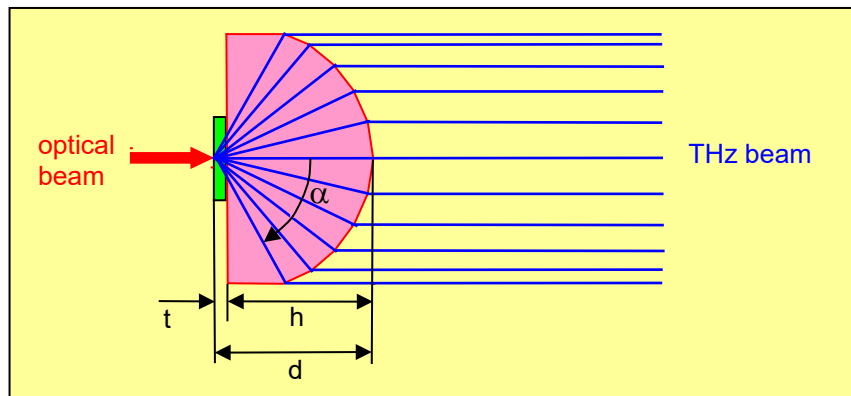
Elliptic collimating lens

material	undoped HRFZ-silicon
specific resistance ρ	>10 k Ω ·cm
refractive index n	3.41
diameter	20 mm
height h	13.8 mm
distance d	14.4 mm
flat surface	polished
elliptic surface	polished
PCA chip thickness t	0.6 mm



Terahertz beam

collimated with 20 mm diameter	
collection angle α	54.6°



Patent DE 10 2006 037470 A1